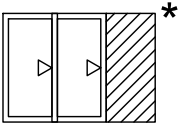


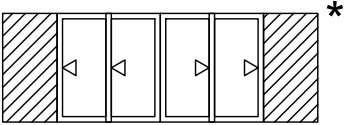
# ***TECHNICAL MANUAL:*** **QUANTUM CAVITY STACKER DOOR**

CONFIGURATIONS



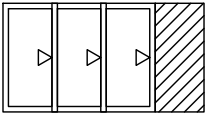
**2 PANEL**  
MAX FRAME WIDTH 4500

*\* SCREEN OPTION AVAILABLE*

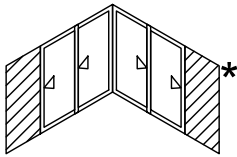


**4 PANEL**  
MAX FRAME WIDTH 6400

*\* SCREEN OPTION AVAILABLE*

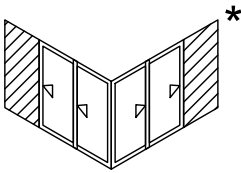


**3 PANEL**  
MAX FRAME WIDTH 6000



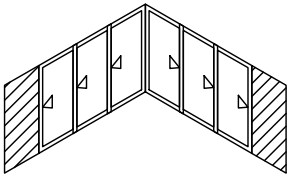
**4 PANEL (2 + 2 INT)**  
MAX FRAME WIDTH 4500 PER RETURN

*\* SCREEN OPTION AVAILABLE*

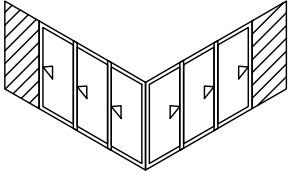


**4 PANEL (2 + 2 EXT)**  
MAX FRAME WIDTH 4500 PER RETURN

*\* SCREEN OPTION AVAILABLE*



**6 PANEL (3 + 3 INT)**  
MAX FRAME WIDTH 6000 PER RETURN

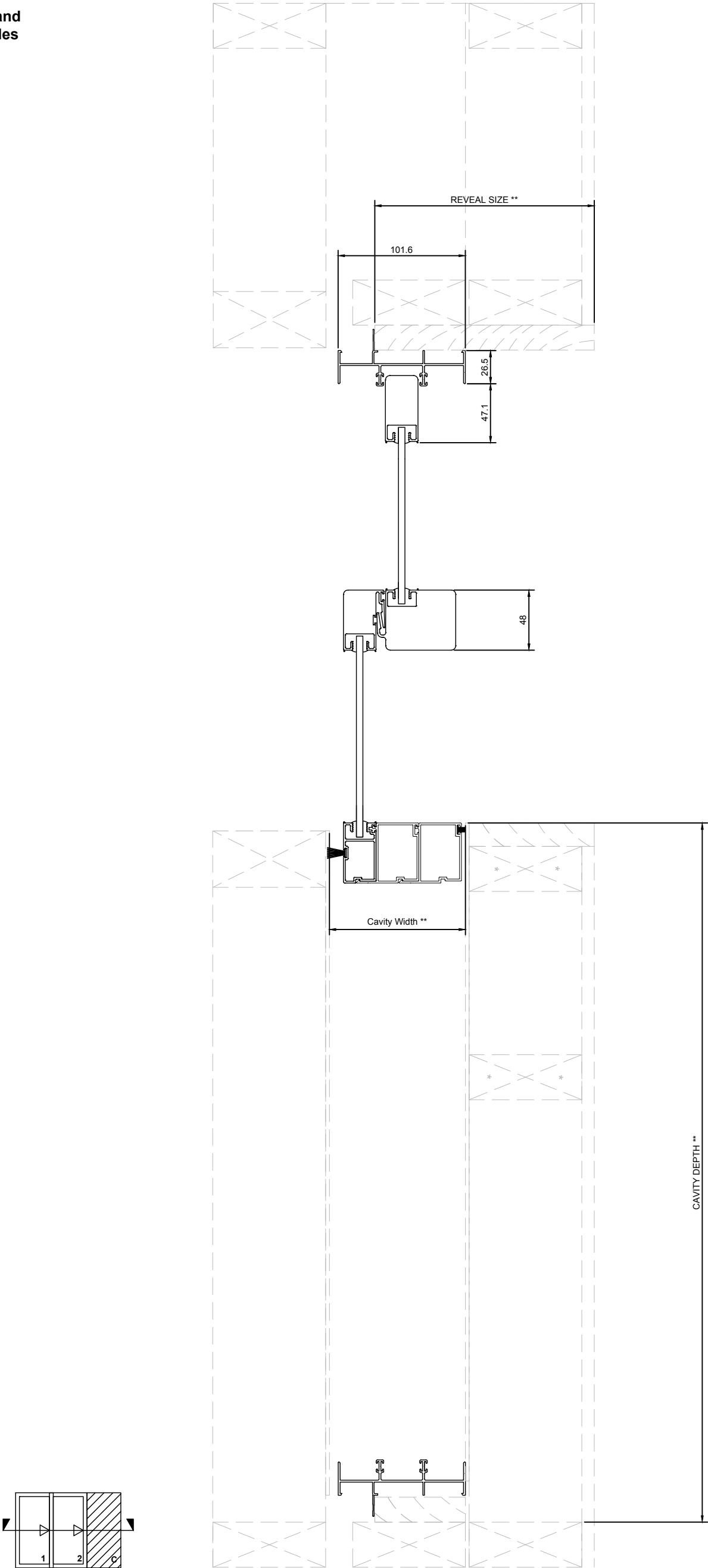


**6 PANEL (3 + 3 EXT)**  
MAX FRAME WIDTH 6000 PER RETURN

QCSD - TECHNICAL MANUAL

4.0 - CROSS SECTIONS | 2 PANEL

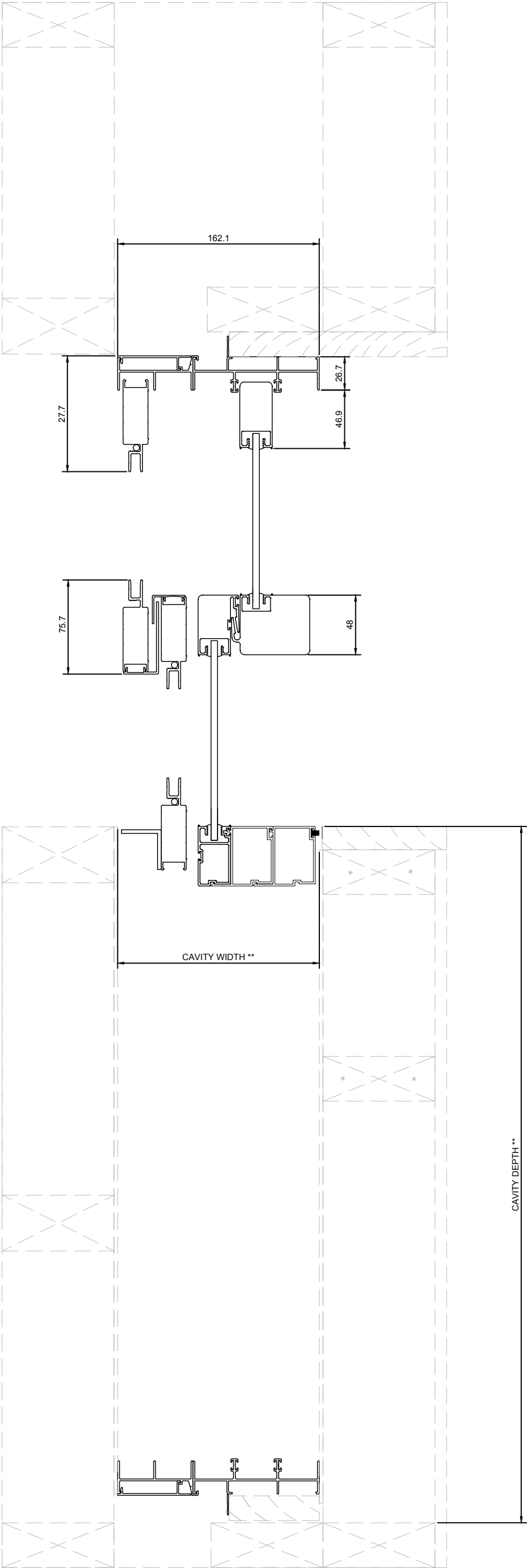
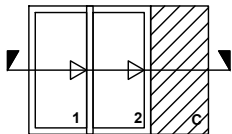
\*\* Size Varies with door size and site rating - ref to Trend Sales Representative



QCSD - TECHNICAL MANUAL

4.0 - CROSS SECTIONS | 2 PANEL WITH SCREENS

\*\* Size Varies with door size and site rating - ref to Trend Sales Representative



4.0 - CROSS SECTIONS | 2 PANEL, 2 PANEL WITH SCREENS, 4 PANEL AND 4 PANEL WITH SCREENS

2 PANEL & 4 PANEL

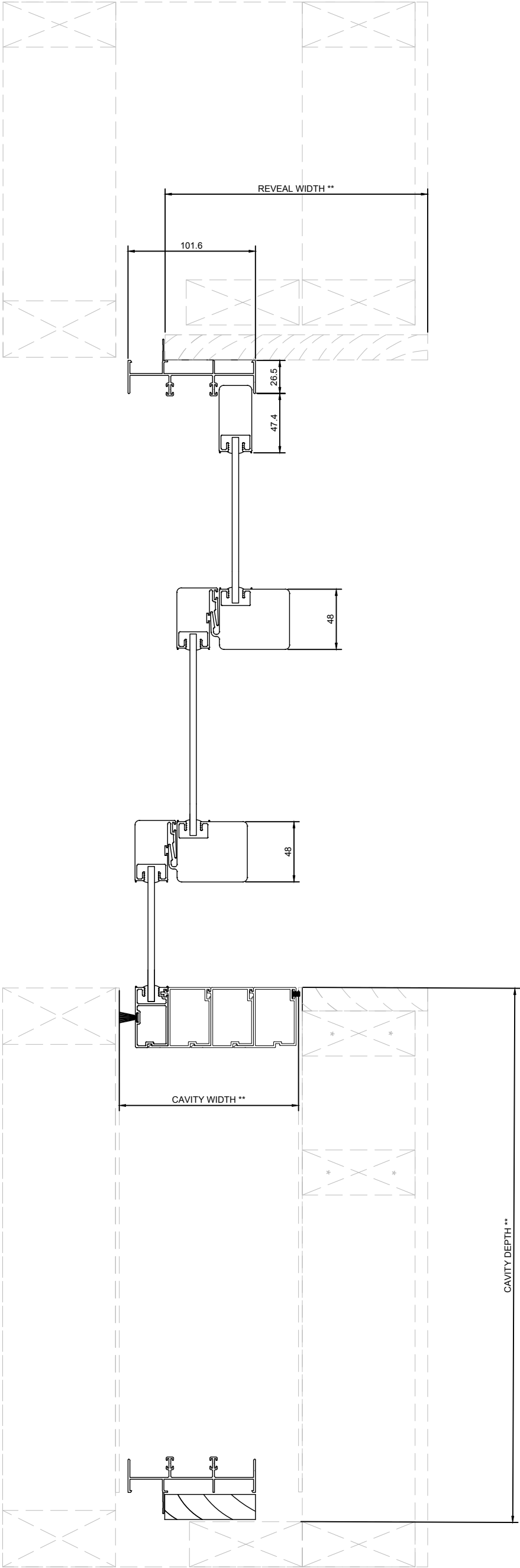
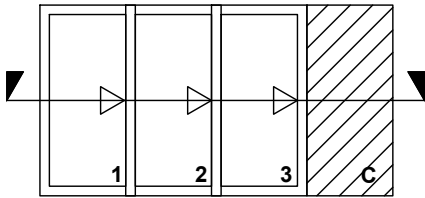
\*\* Size Varies with door size and site rating - ref to Trend Sales Representative

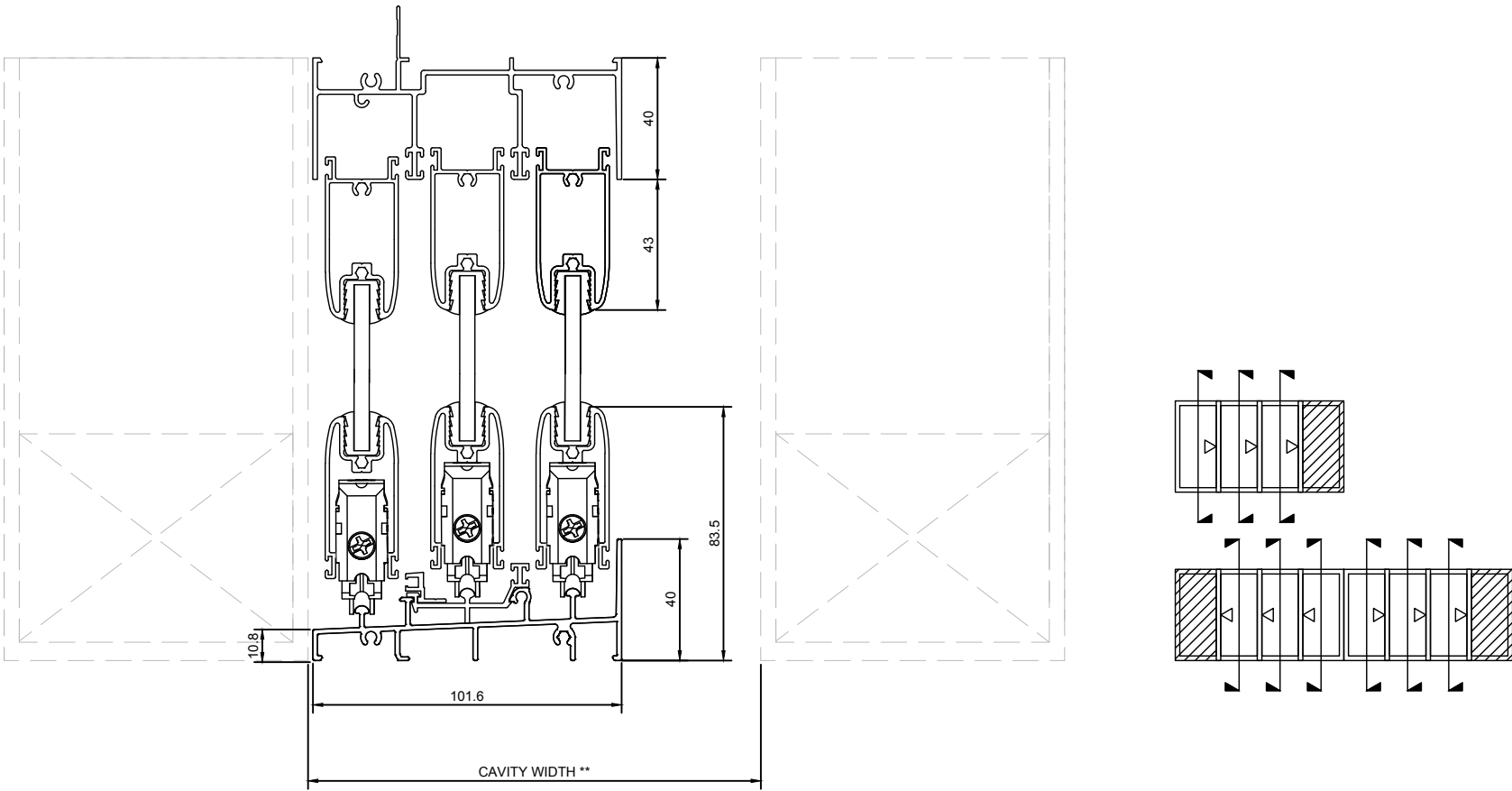
2 PANEL WITH SCREENS & 4 PANEL WITH SCREENS

QCSD - TECHNICAL MANUAL

4.0 - CROSS SECTIONS | 3 PANEL

\*\* Size Varies with door size and site rating - ref to Trend Sales Representative

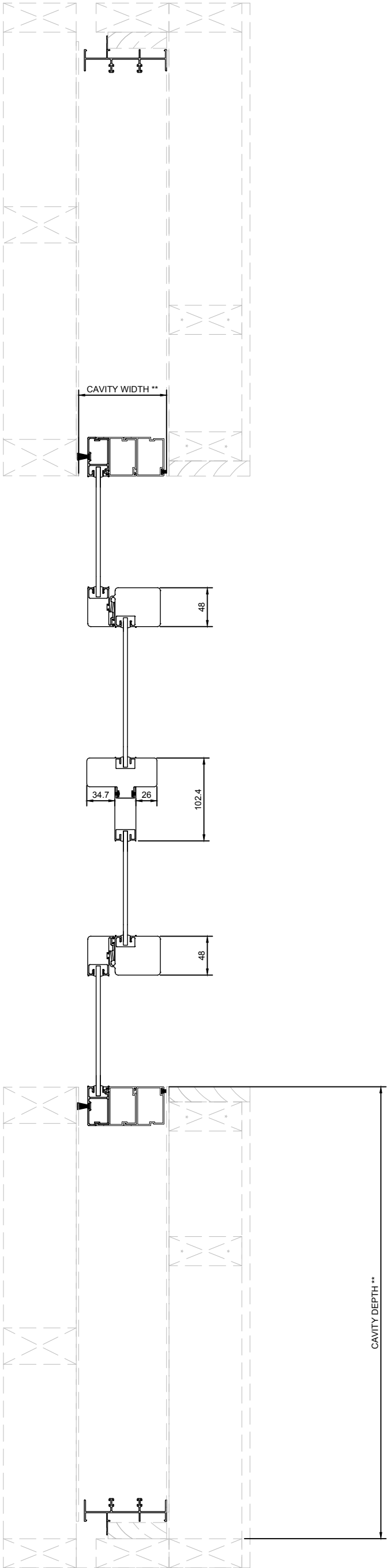
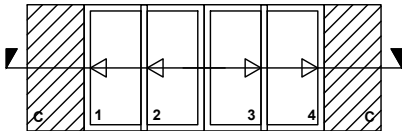




QCSD - TECHNICAL MANUAL

4.0 - CROSS SECTIONS | 4 PANEL

\*\* Size Varies with door size and site rating - ref to Trend Sales Representative

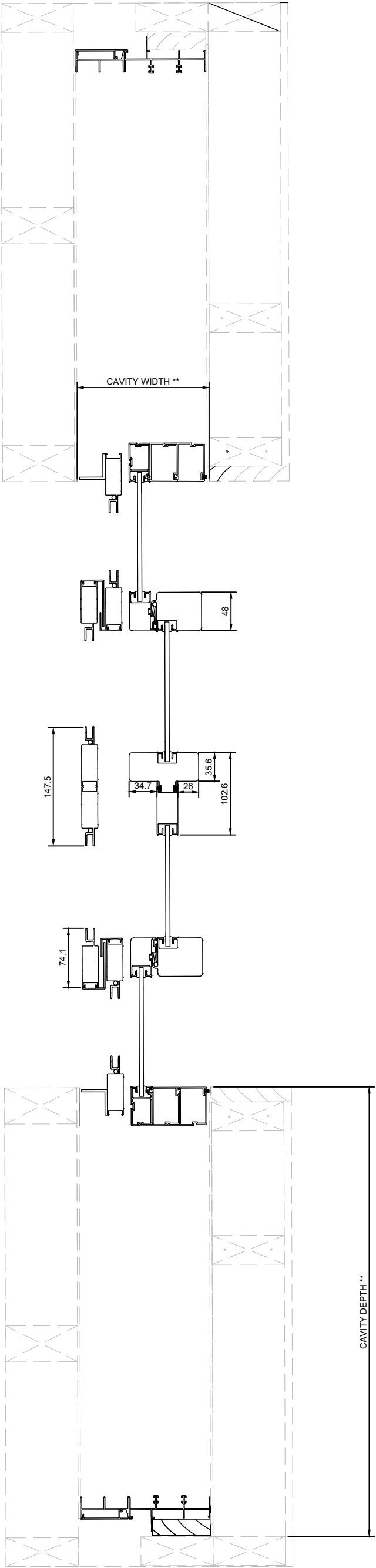
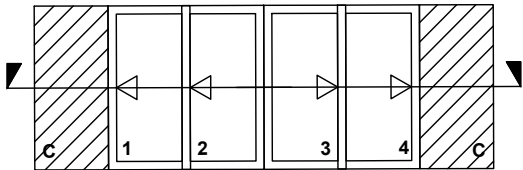




QCSD - TECHNICAL MANUAL

4.0 - CROSS SECTIONS | 4 PANEL WITH SCREENS

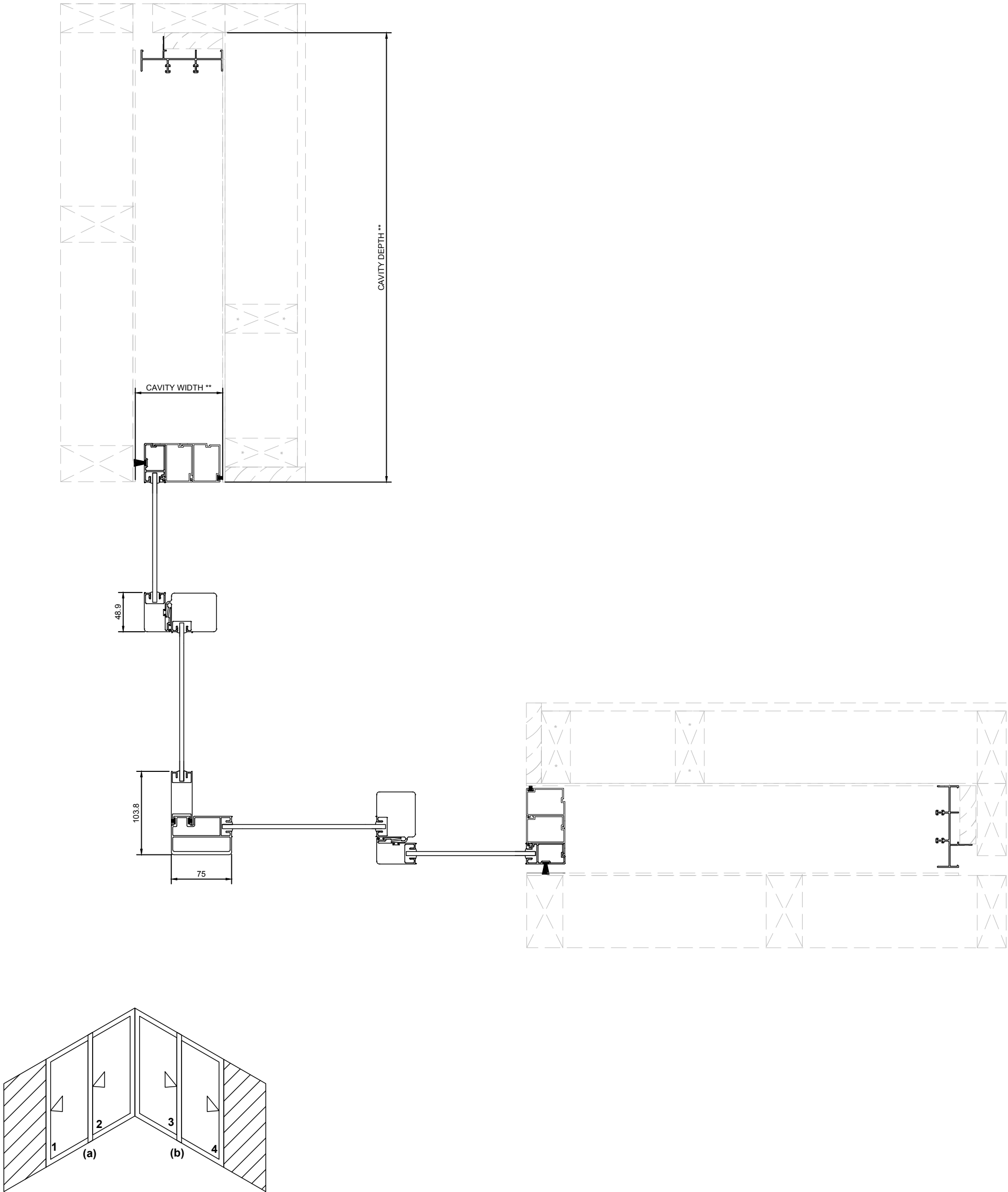
\*\* Size Varies with door size and site rating - ref to Trend Sales Representative



QCSD - TECHNICAL MANUAL

4.0 - CROSS SECTIONS | 2 x 2 PANEL EXTERNAL CORNER

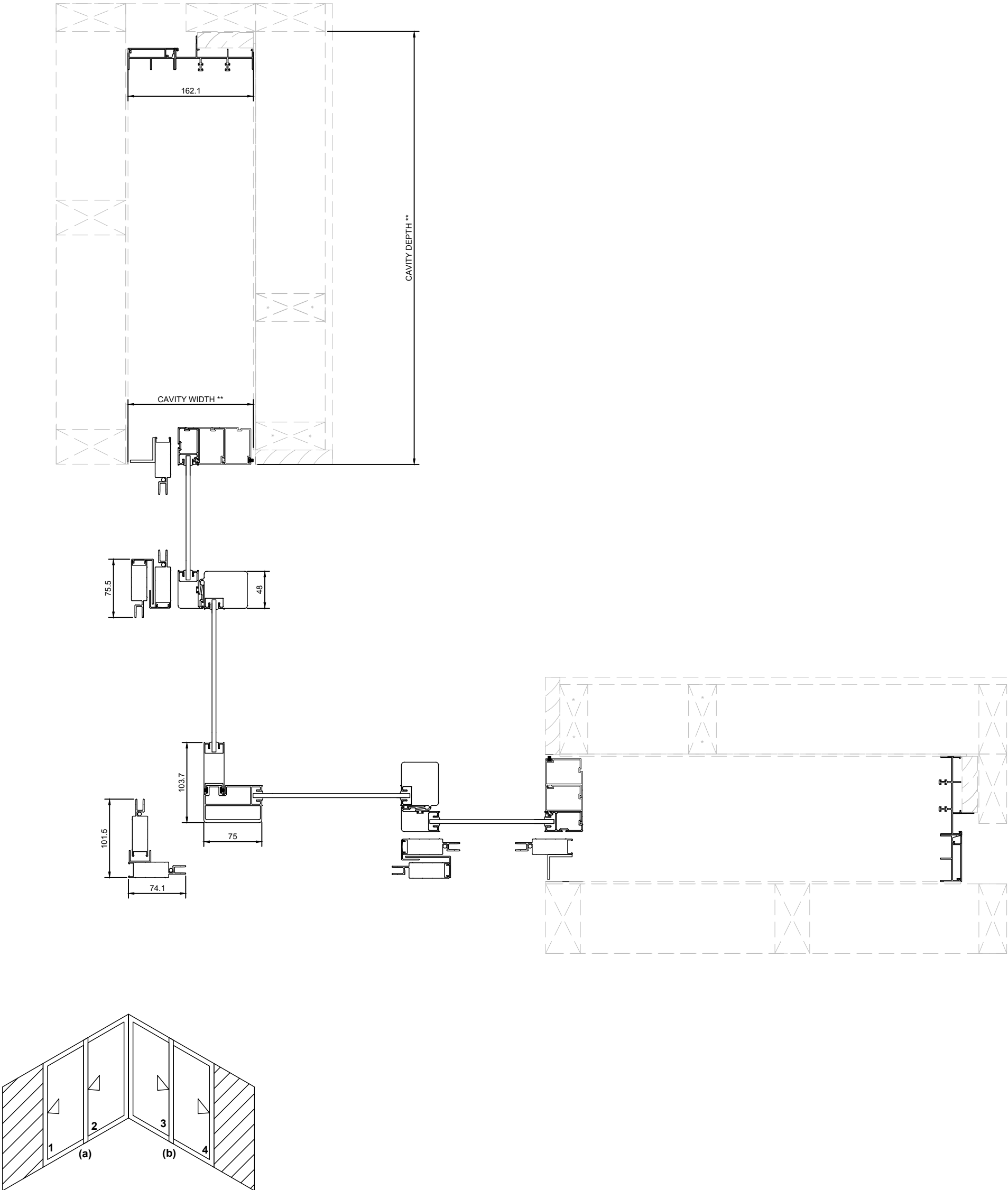
\*\* Size Varies with door size and site rating - ref to Trend Sales Representative



QCSD - TECHNICAL MANUAL

4.0 - CROSS SECTIONS | 2 x 2 PANEL EXTERNAL CORNER WITH SCREENS

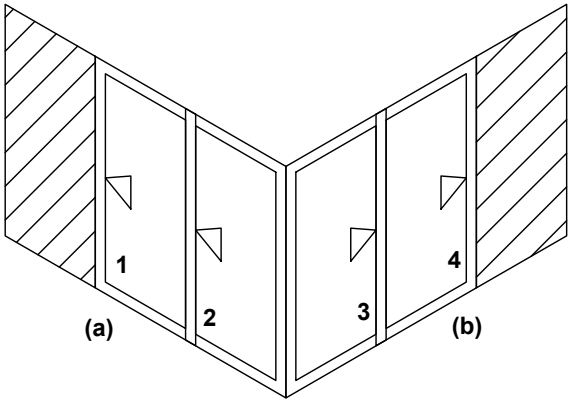
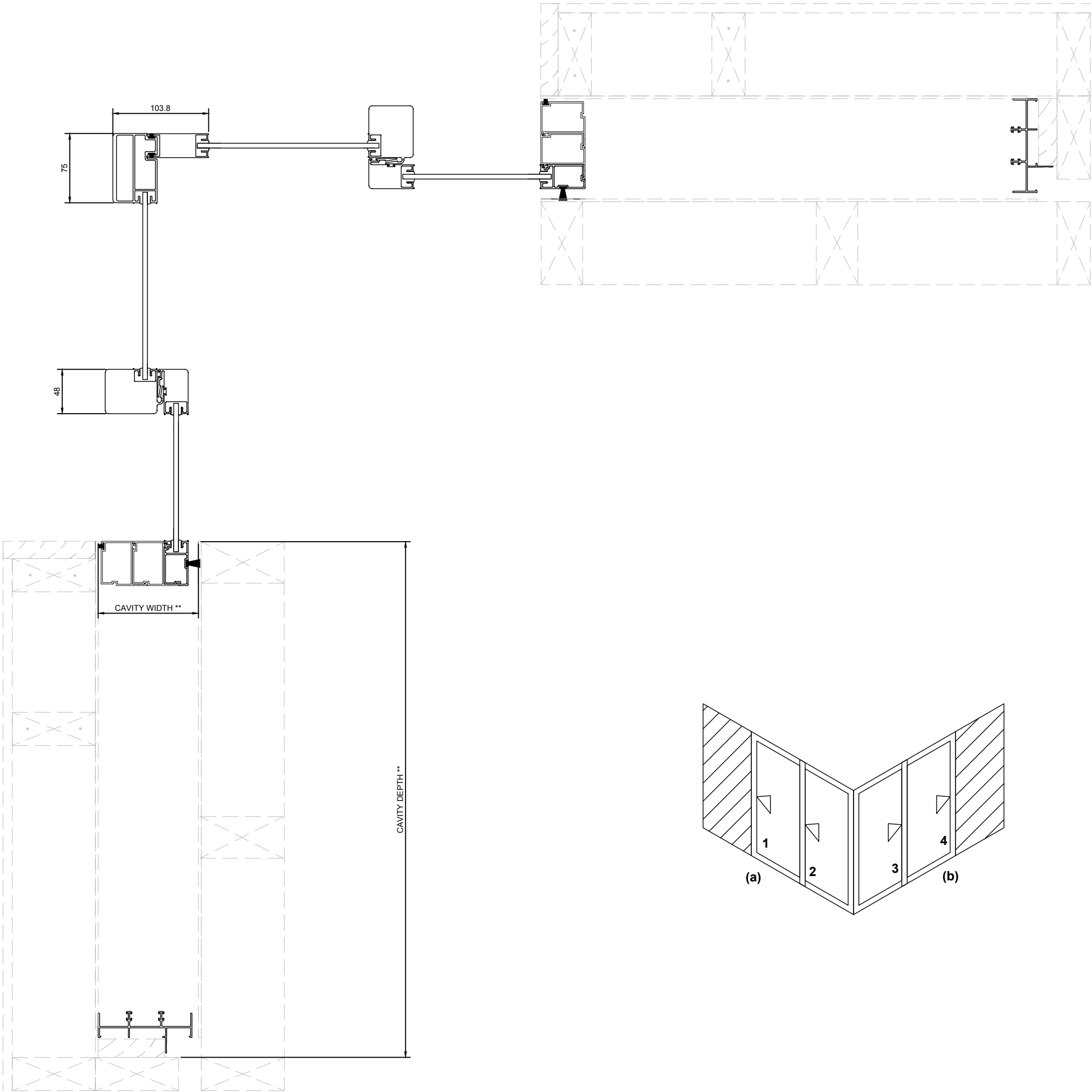
\*\* Size Varies with door size and site rating - ref to Trend Sales Representative



QCSD - TECHNICAL MANUAL

4.0 - CROSS SECTIONS | 2 x 2 PANEL INTERNAL CORNER

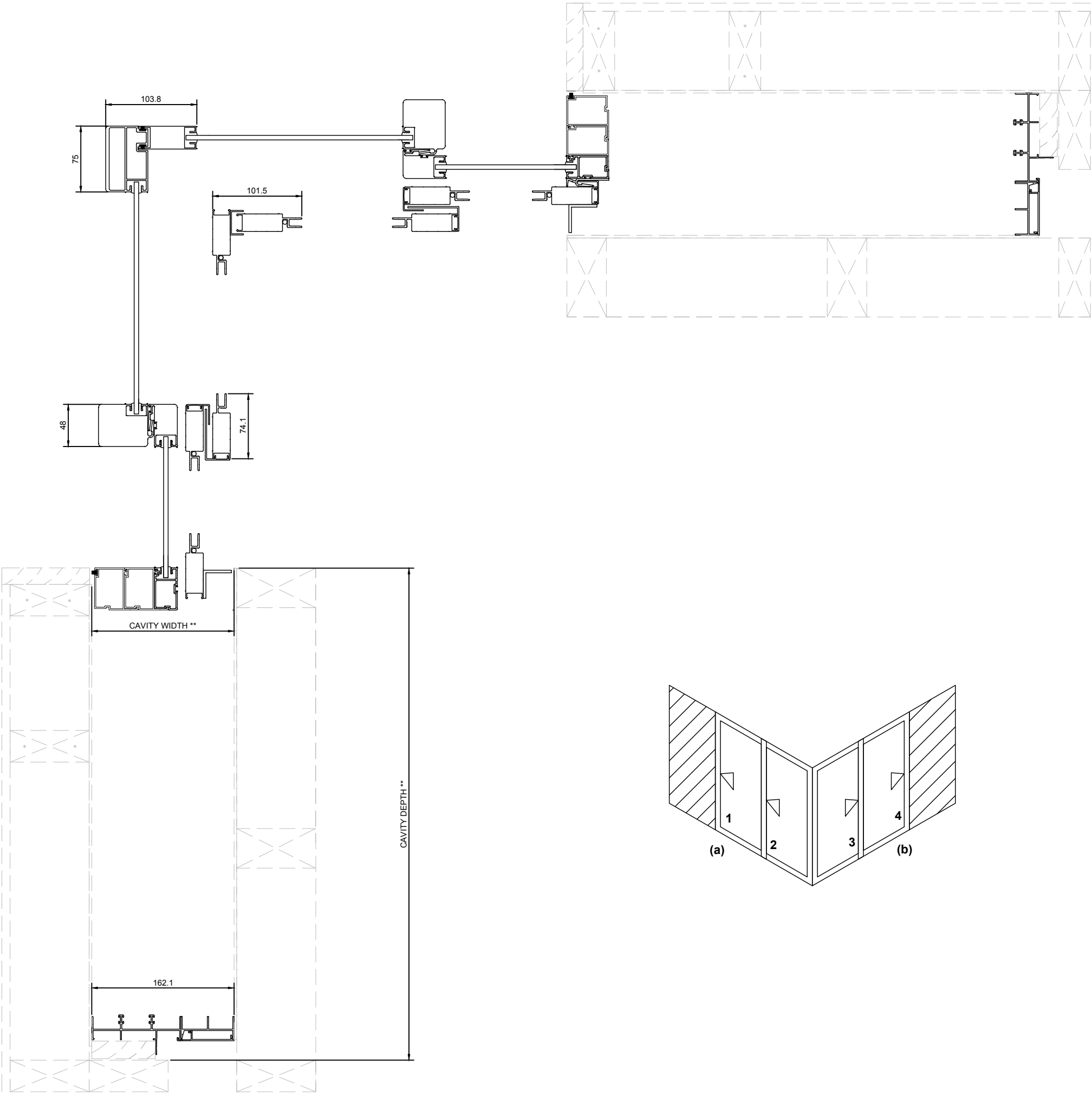
\*\* Size Varies with door size and site rating - ref to Trend Sales Representative



QCSD - TECHNICAL MANUAL

4.0 - CROSS SECTIONS | 2 x 2 PANEL INTERNAL CORNER WITH SCREENS

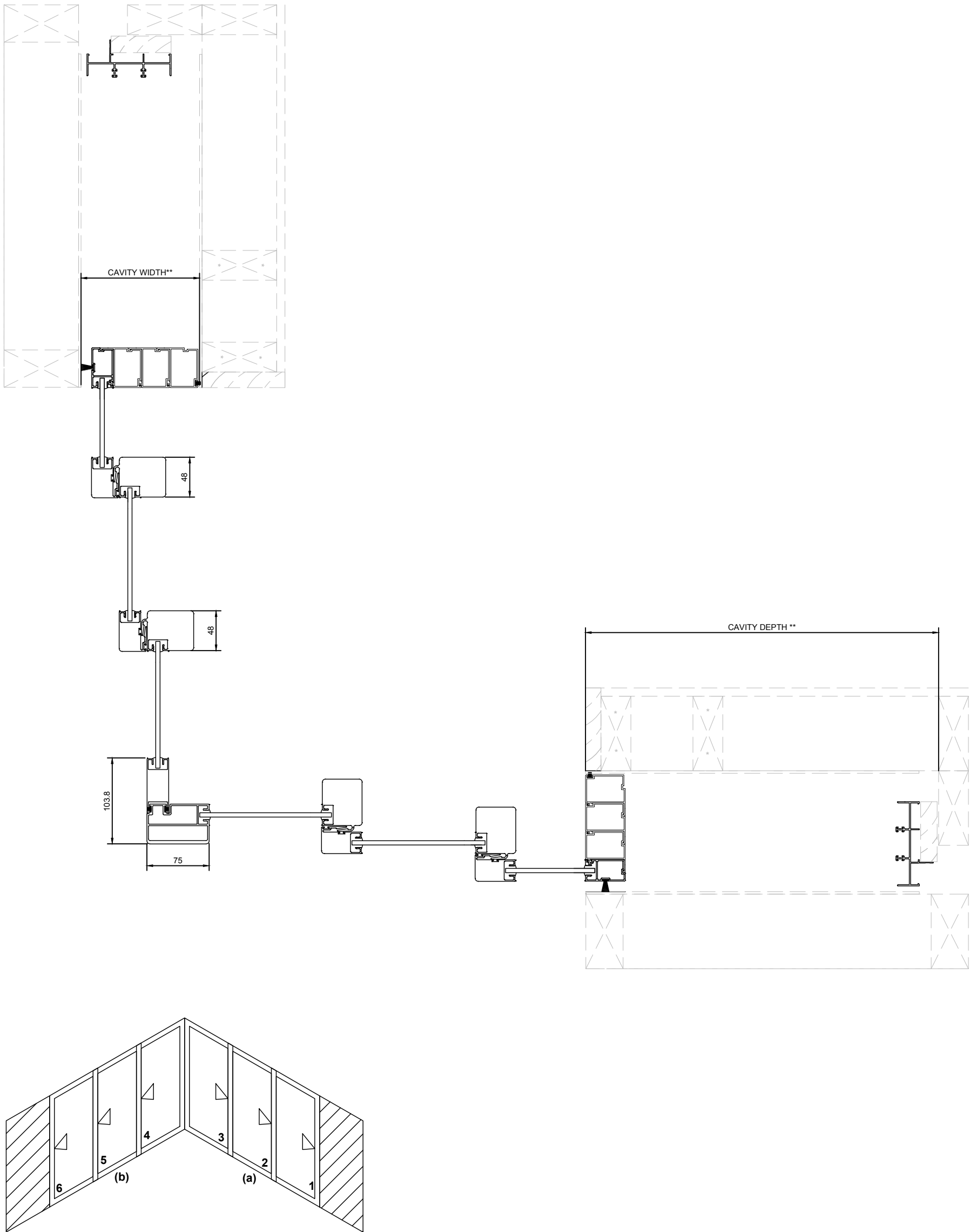
\*\* Size Varies with door size and site rating - ref to Trend Sales Representative



QCSD - TECHNICAL MANUAL

4.0 - CROSS SECTIONS | 3 x 3 PANEL INTERNAL CORNER

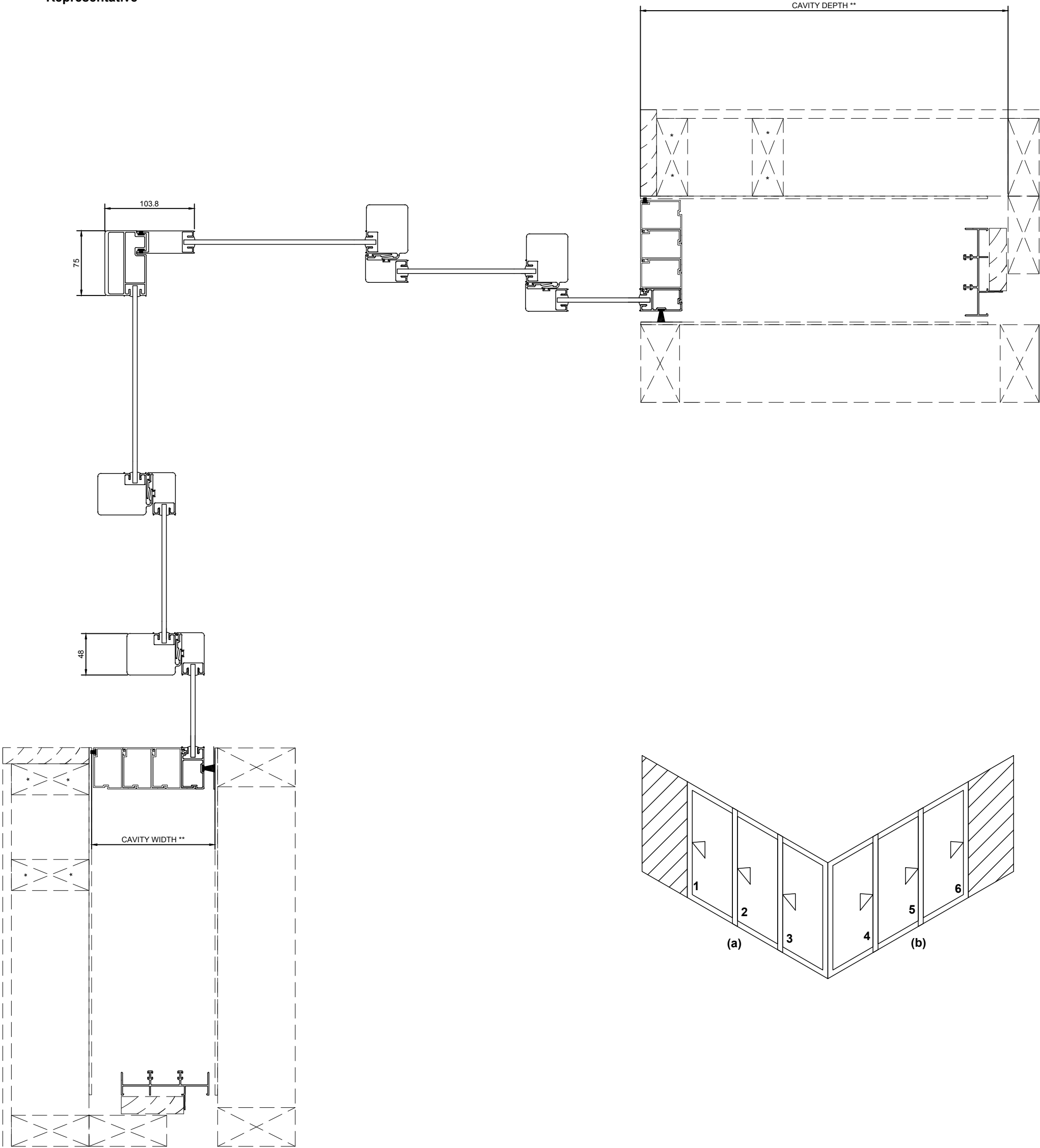
\*\* Size Varies with door size and site rating - ref to Trend Sales Representative



QCSD - TECHNICAL MANUAL

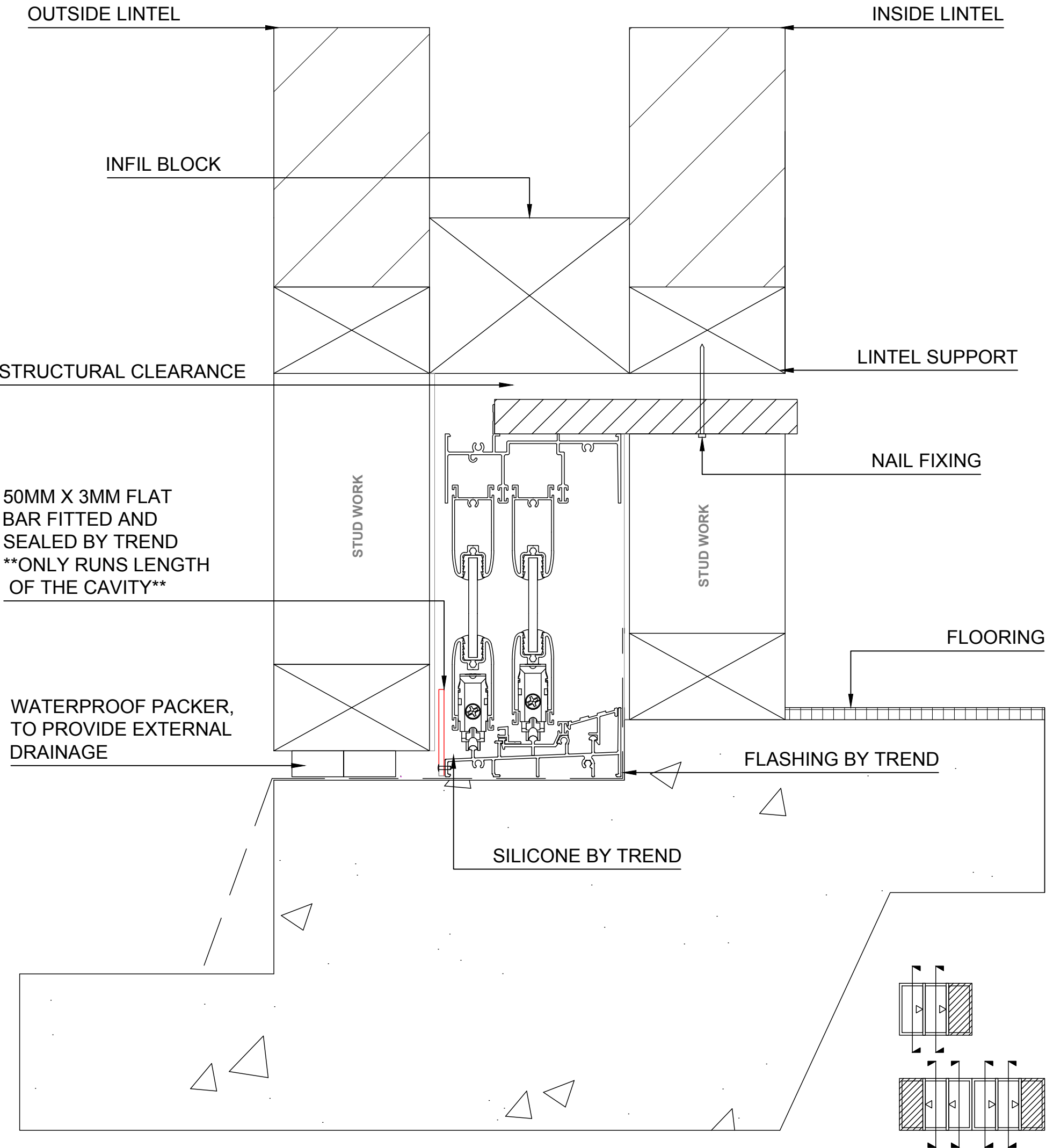
4.0 - CROSS SECTIONS | 3 x 3 PANEL EXTERNAL CORNER

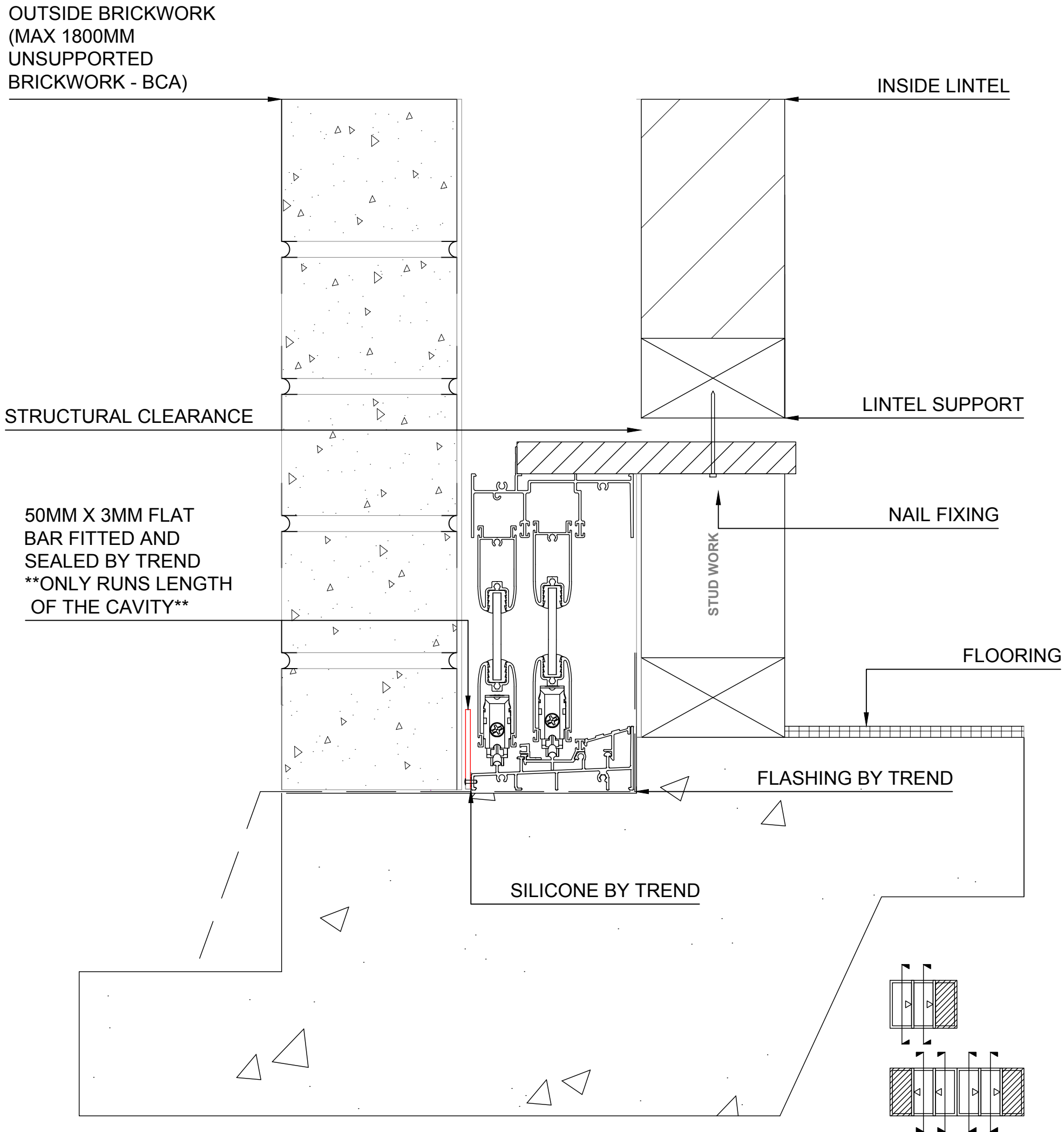
\*\* Size Varies with door size and site rating - ref to Trend Sales Representative

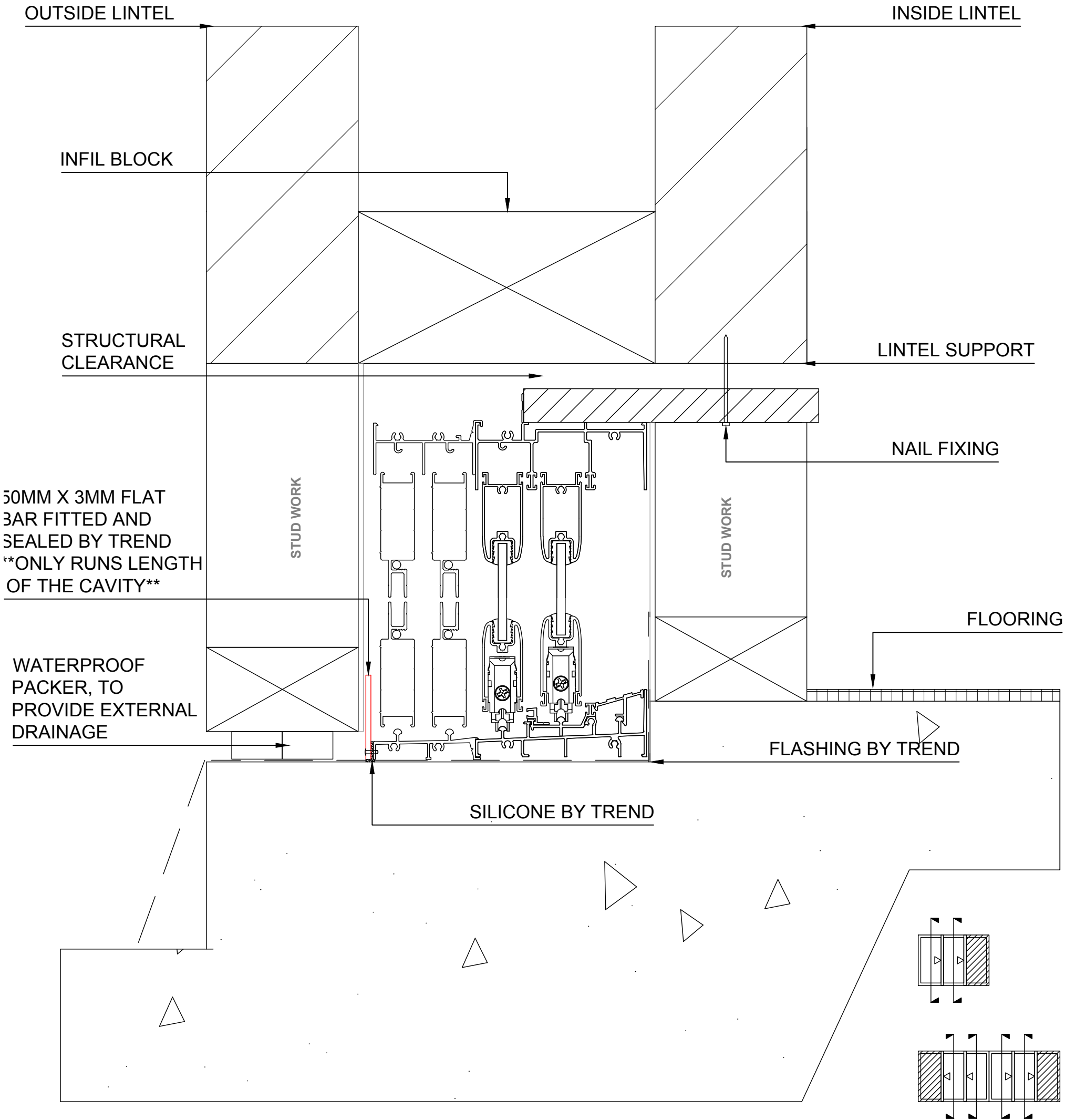


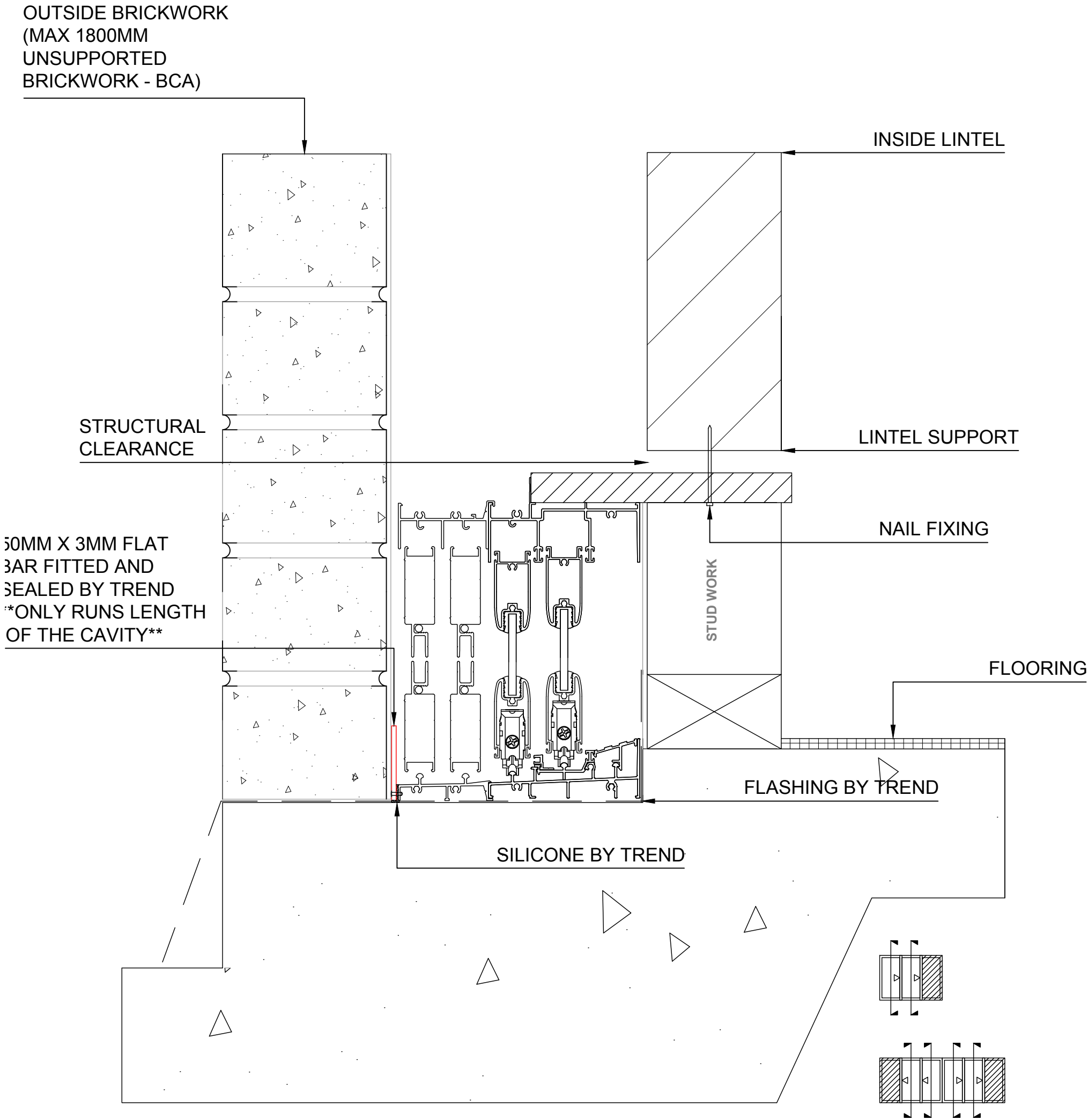
# ***BUILDING IN DETAIL***

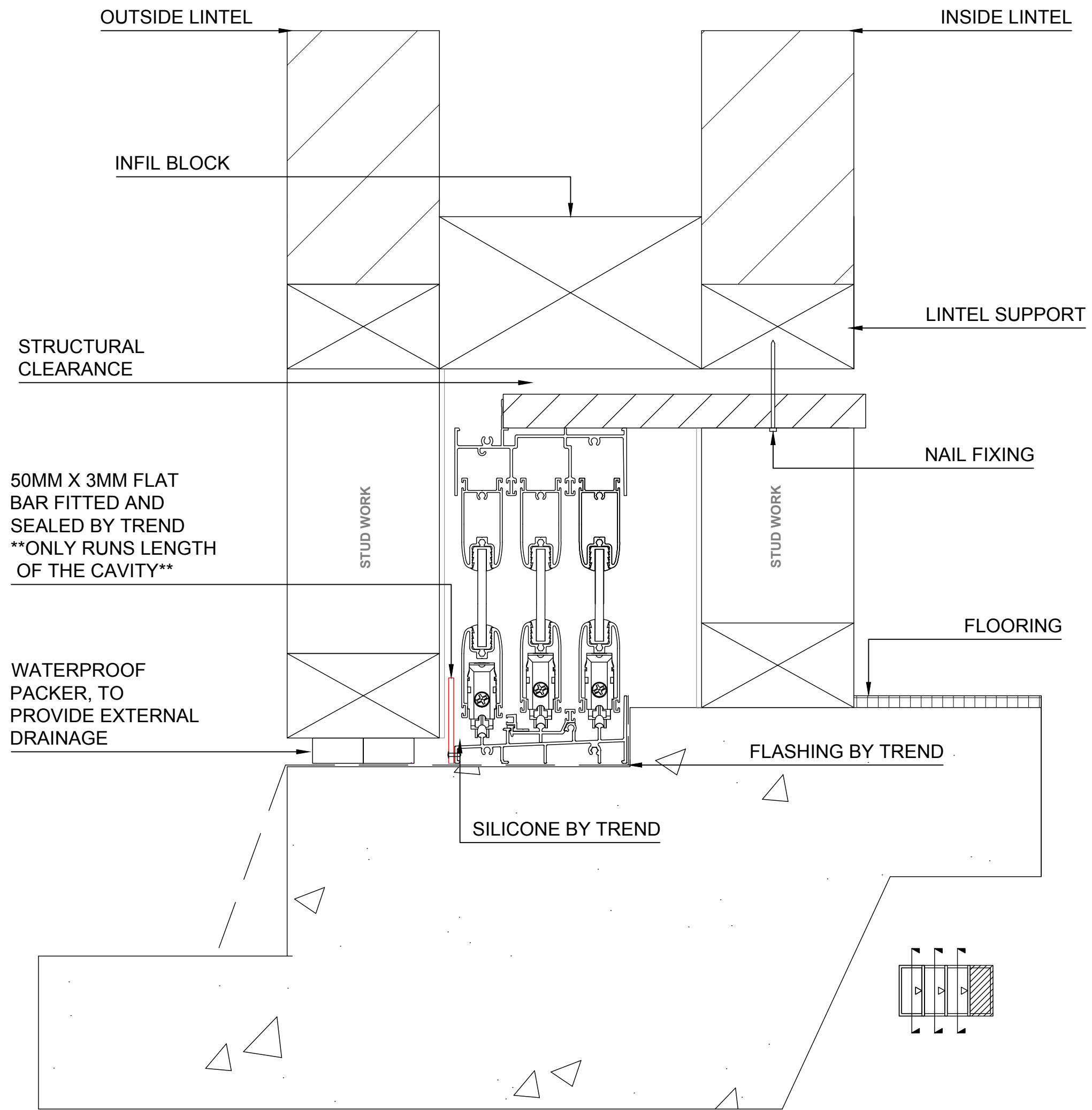


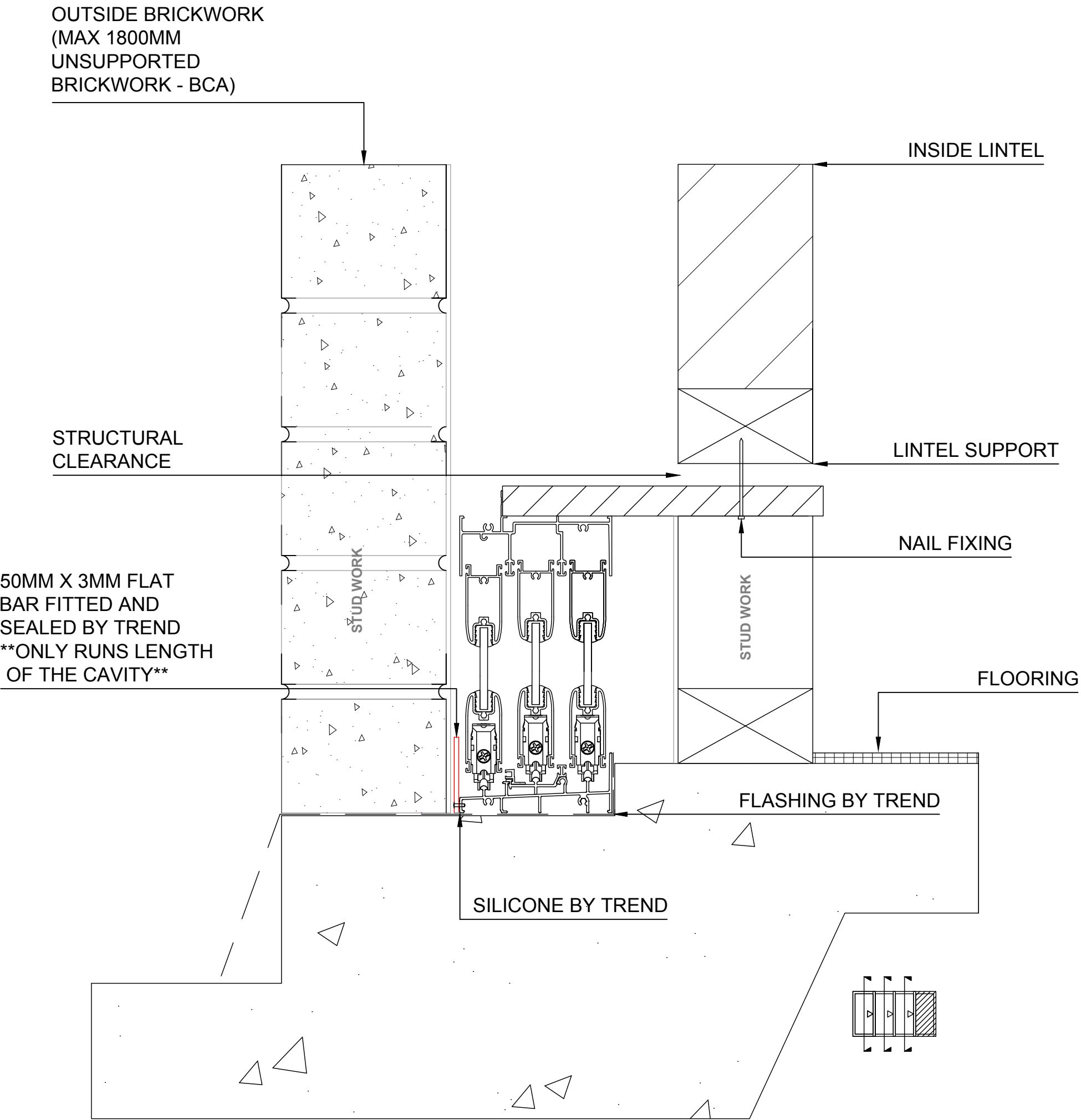


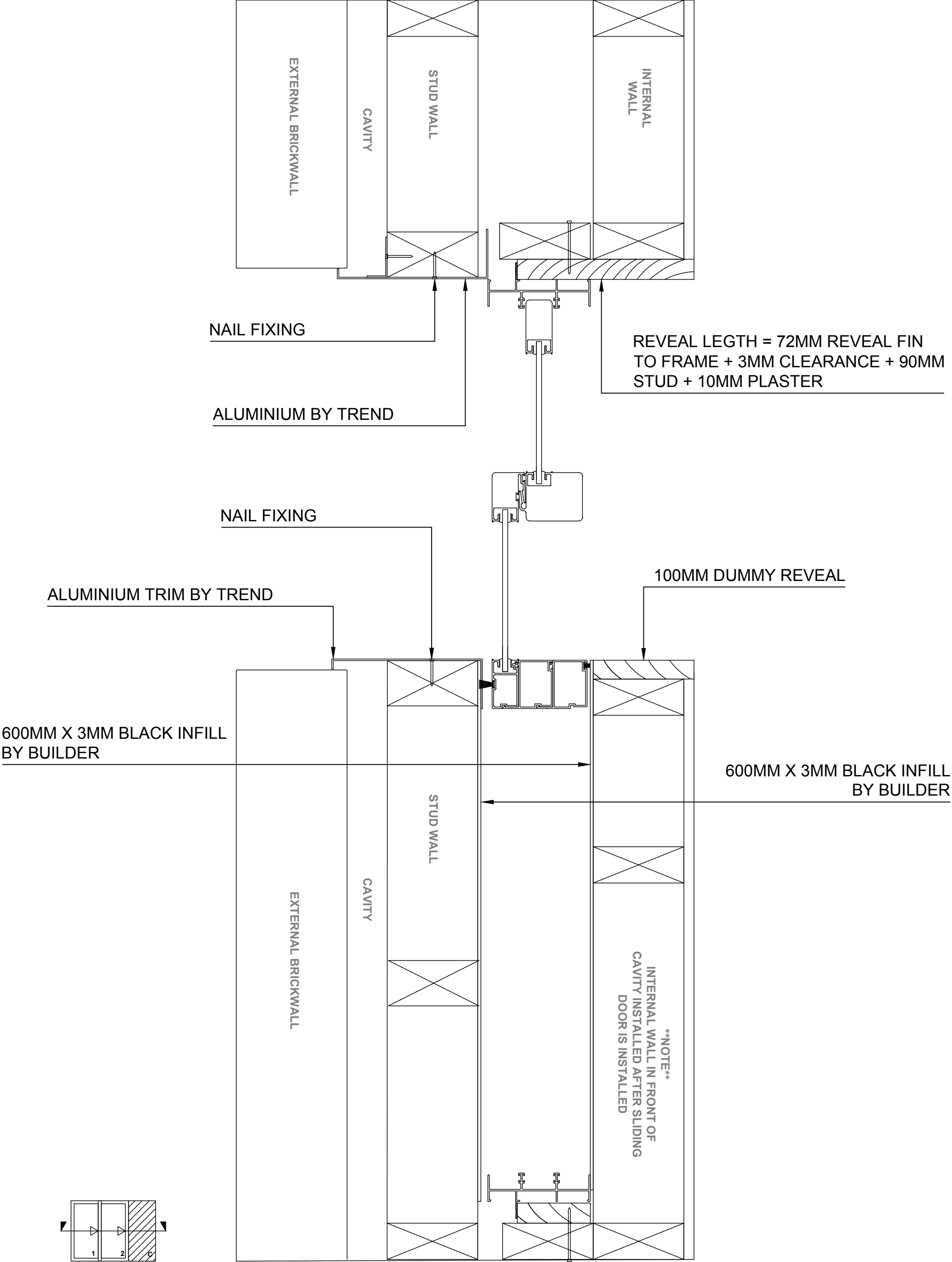


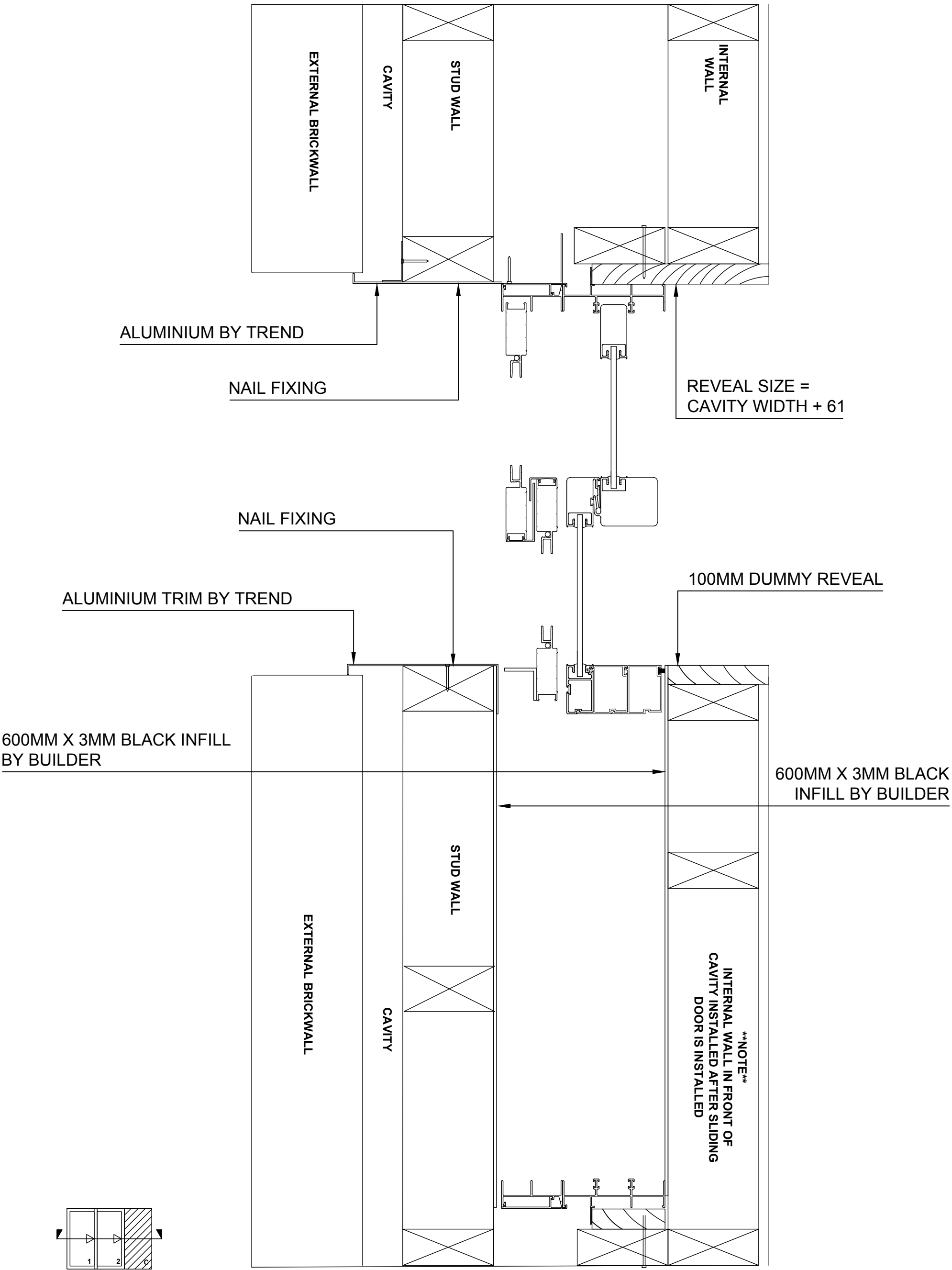




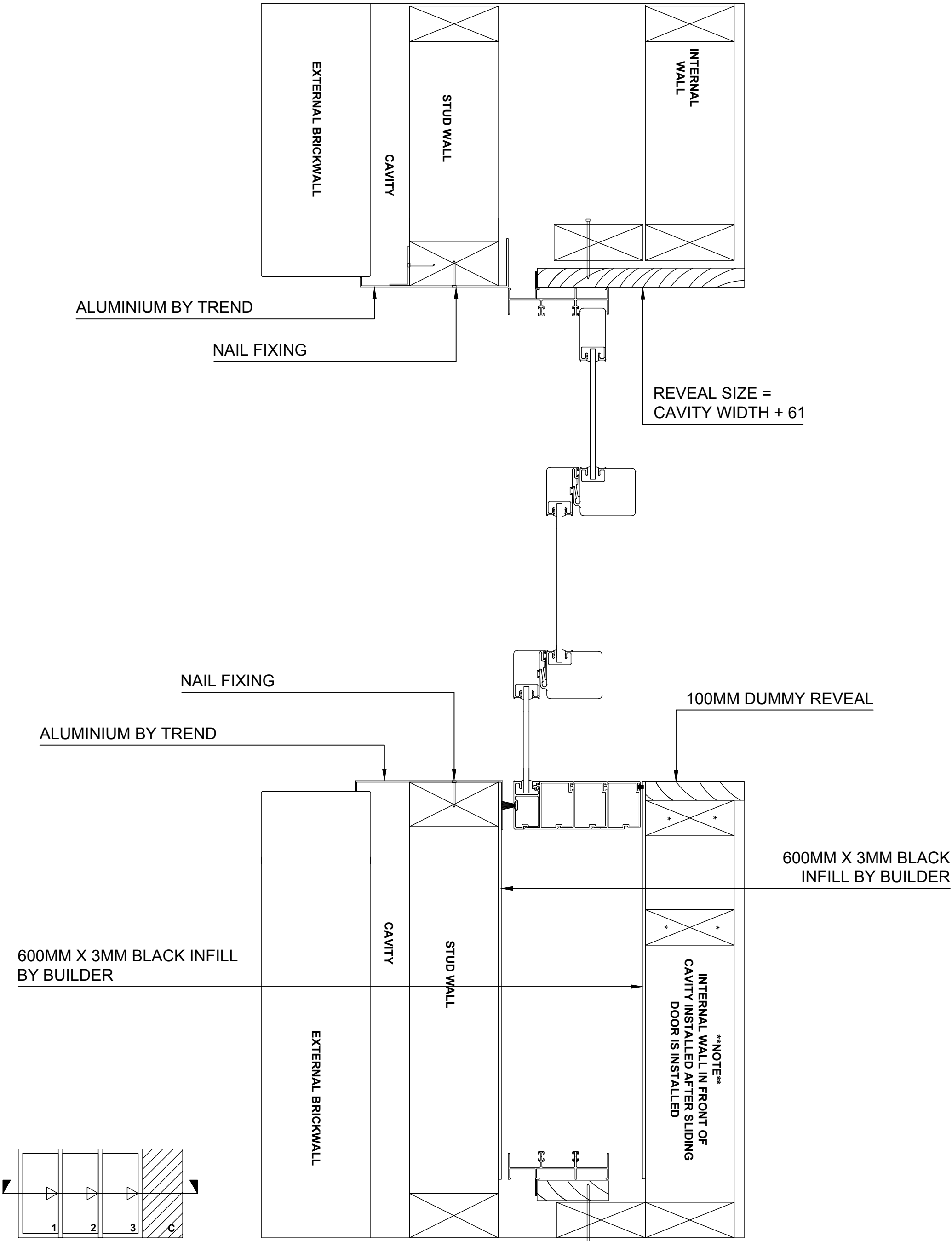












5.0 - BUILDING IN DETAIL | 4 PANEL | UNSUPPORTED BRICKWORK | STACKING CAVITY DOOR WITH SCREENS

